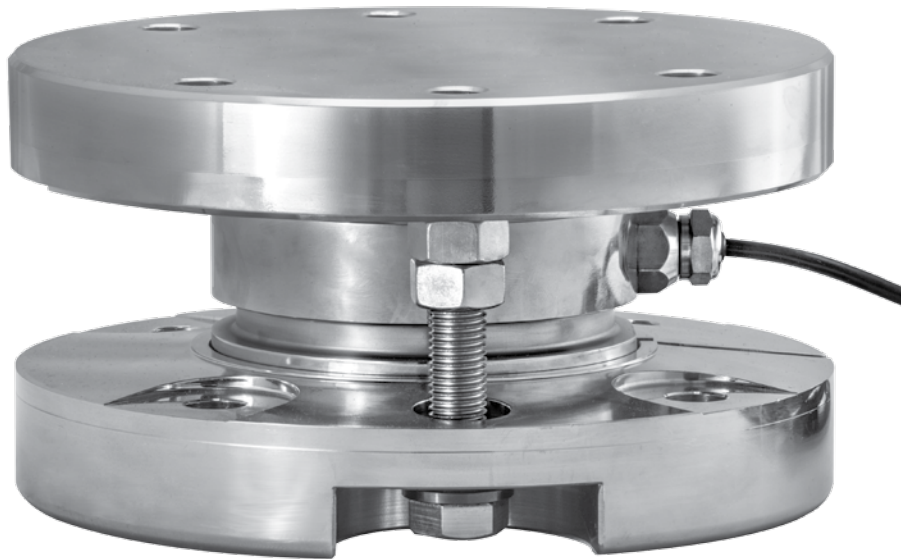


0.5 t ... 30 t



Weigh Module 66-20 with Q50 Load Cell

## Product Description

The type 66-20 weigh module has been designed for use in food and pharmaceutical applications. The electro-polished, all stainless steel construction and hygienic design is ideally suited for CIP (Clean-in-Place) and SIP (Sterilization-in-Place) environments.

The weigh module provides system integrators with a uniform, compact and economical solution across a wide range of load cell capacities – from 500 kg through to 30 000 kg.

- Designed for Q50 compression disk load cells
- Material: alloy steel (1.0443), plated; alternatively electro-polished stainless steel

## Available Accessory

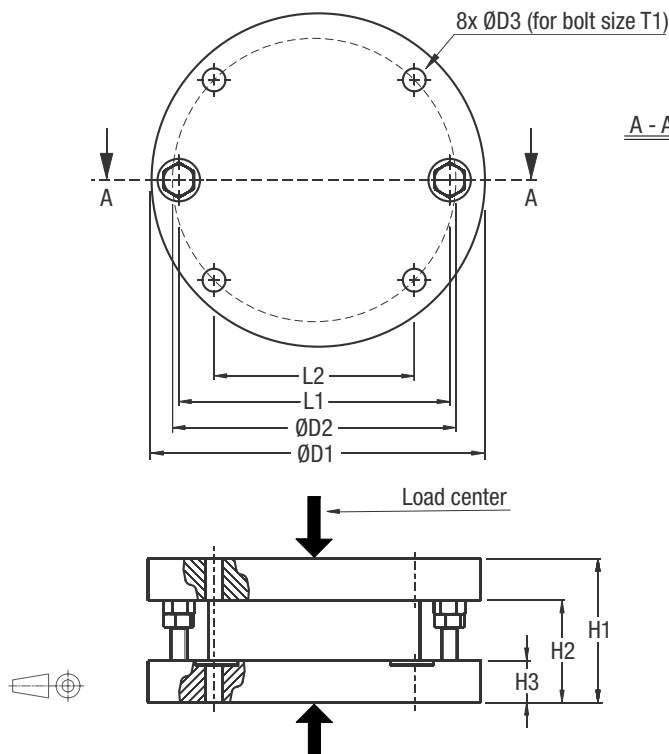
- Welding fixture

## Key Features

- Capacities 0.5 t ... 30 t
- Low profile design
- Easy to install
- Especially designed for hopper and tank weighing
- With integrated lift off protection
- Load cell replacement requires minimum lifting height

## Options

- Stainless steel version

**Dimensions (in mm)**


- ATTENTION:**
- Mounting bolts are not included in delivery.
  - Load carrier and foundation plate to be horizontal:
    - within 0.8/100 for general applications
  - External bumper stops are required.  
Gap approx. 2...3 mm

Weigh Module Type	Capacity	D1	D2	D3	H1	H2	H3	L1	L2	T1	Max. lift off force (t)	Weight excl. load cell (kg)
66-20	500 kg ... 5 t	160	130	13	80	60	25	130	92	M12	2.5	6.7
	10 t	188	147	17	102	72	32	146	103	M16	4.5	13.1
	20 t ... 30 t	230	185	17	125	92	36	185	132	M16	4.5	21.4