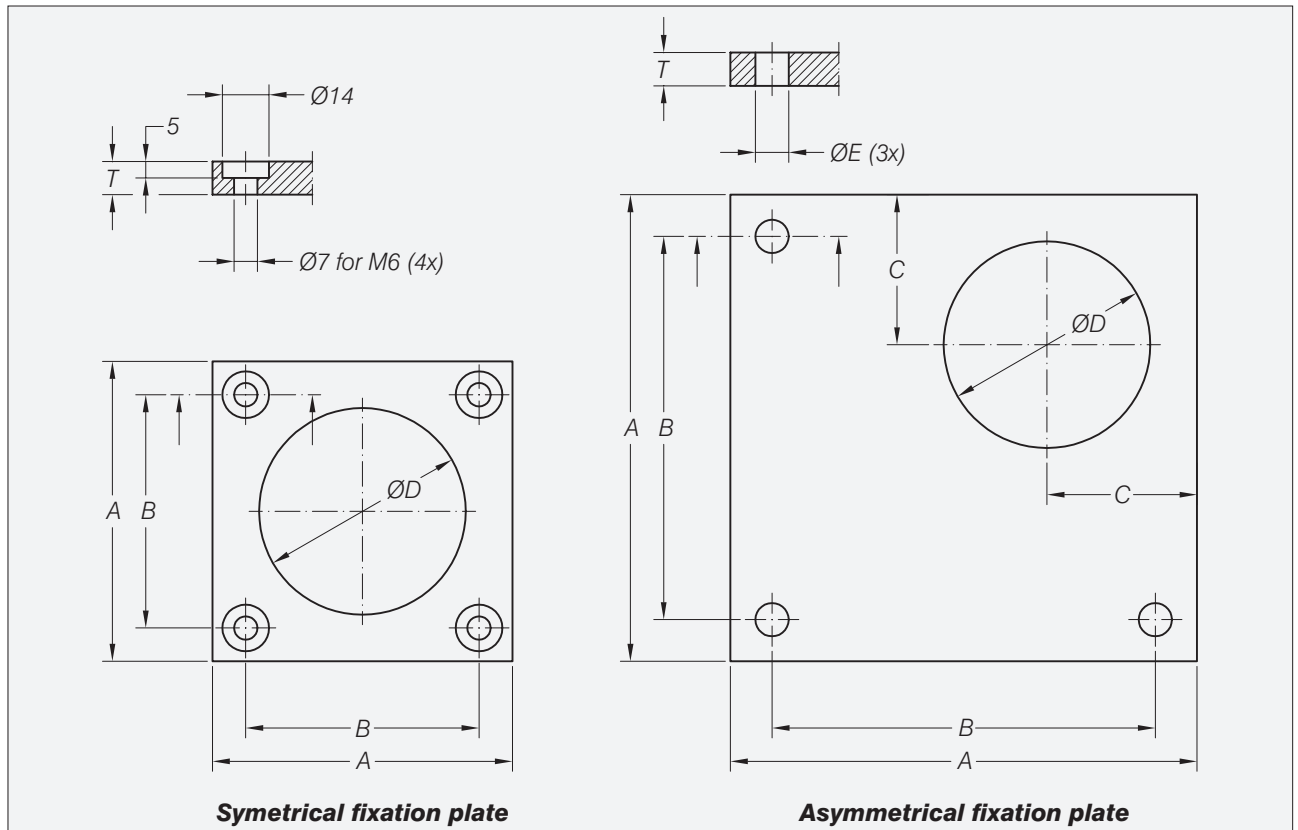


Fixation Plates for Feet 52-02/10/15

Material: black polypropylen

- Symmetrical for foot with diameter $\varnothing 60$.
- Symmetrical for foot with diameter $\varnothing 80$.
- Asymmetrical for foot with diameter $\varnothing 60$.
- Asymmetrical for foot with diameter $\varnothing 80$.
- Asymmetrical for foot with diameter $\varnothing 100$.

Dimensions Fixation Plates



	A	B	C	D	E	T
Symmetrical for foot with diameter $\varnothing 60$	90	70	n.a.	62	n.a.	10
Symmetrical for foot with diameter $\varnothing 80$	110	90	n.a.	83	n.a.	10
Asymmetrical for foot with diameter $\varnothing 60$	140	115	45	62	10 for M8	10
Asymmetrical for foot with diameter $\varnothing 80$	160	135	55	83	10 for M8	10
Asymmetrical for foot with diameter $\varnothing 100$	160	155	65	104	12 for M10	15

Beam Type
Load Cells